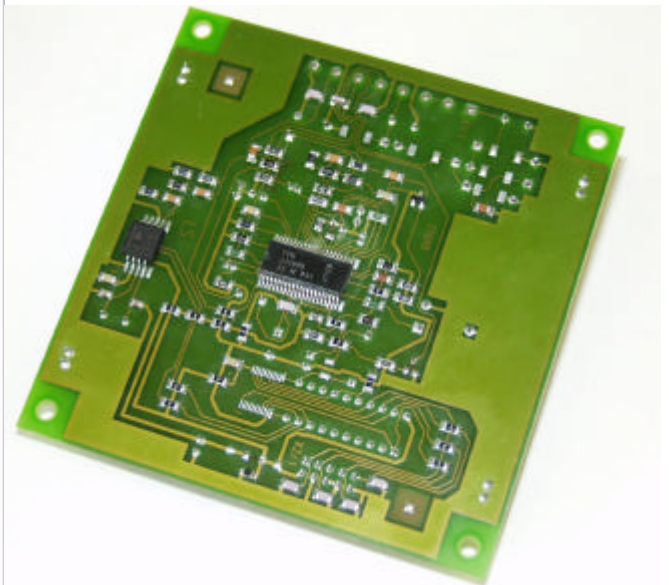


Dialer for analogue Telephone Lines 21xx Series

Data Sheet Model: 2108B



Applications:

Emergency call systems in elevators, hotels, factories etc., supervising systems to monitor rooms or to transmit various informations. Further, for many different applications at home or for safety and anti-thief equipment.

Description:

The model 2108B is designed for use with PBX systems or the public telephone line. The unit consists of a microcontroller unit and a full duplex handsfree circuit.

After the emergency key has been pressed (not included in delivery) , the circuit is connected to the tel line and starts after approx 2 seconds dialling the phone number which is stored in the μ C's EEPROM.

This phone number is factory pre-set

The calling party may hear the dial tone, followed by the DTMF signals and finally the ring back tone.

Once the called party has picked up the phone, one can communicate on a very high level of acoustic quality.

The pcb is also equipped with a volume control to adjust the receiving volume level to local requirements by means of a small standard tool.

www.boehm-elektronik.com - email: info@boehm-elektronik.com
Tel +49(0)906 22720 - Fax +49(0)906 22728 - 86609 Donauwörth, Germany

When the called party terminates the call by placing back the handset, the unit will still hold the line. Then, the emergency key must be re-set to the "off-hook" mode. So, it can be easily controlled who has made the emergency call.

The dialer device model 2108B has no busy or dial-tone detection, due to this the dialling mode can never be blocked. There is no ring detector also. (Ring detector available optional)

The model 2108B has the following connections (Screwing block X1):

Pin1:	Telephone line (TIP)
Pin2:	Telephone line (RING)
Pin3:	Emergency switch
Pin4:	Emergency switch
Pin5:	Mic (+) (electret condenser type)
Pin6:	Mic (-)
Pin7:	Speaker (+)(32 ... 50 ohms, works from 7 ohms)
Pin8:	Speaker (-)

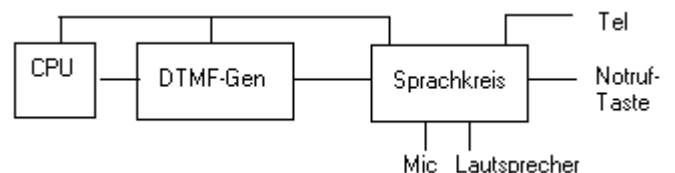
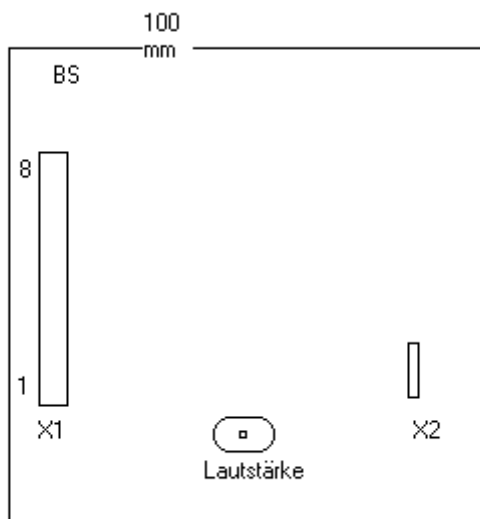
The Circuit:

The circuit consists of a fully integrated full-duplex handsfree speech IC and works within a line current range from less than 19 to over 50 mA. There is no ring detector. The dialler can only seize the line as long as the emergency switch is closed.

An additional ring detector circuit is available as an option. This device serves as a "wake-up" circuit to let the dialer go online to dial out. Also, there is a melody generator on board of the model 2108B. It can be programmed on customer's demand.

Technical Data:

Telephone interface	:	analogue
Standard	:	TBR 21:1998 (where applicable)
Dimensions, Weight	:	approx. 100 x 100 x 22 mm, < 50 g
Setting the phone number	:	factory programmed (optional: interface on board)
Dialling method	:	DTMF to CCITT
EMC	:	EN55022:1998 Class B, EN55024:1998 (*)
		(*) EN55024 upon application



Common version Date: 31-01-02 Version: 1.0
 www.boehm-elektronik.com - email: info@boehm-elektronik.com
 Tel +49(0)906 22720 - Fax +49(0)906 22728 - 86609 Donauwörth, Germany